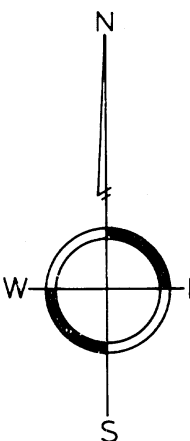
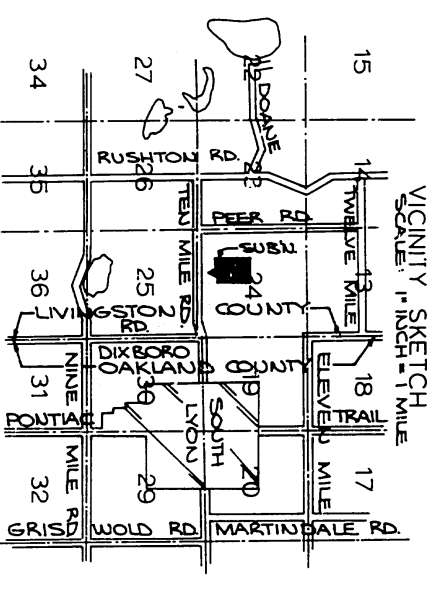
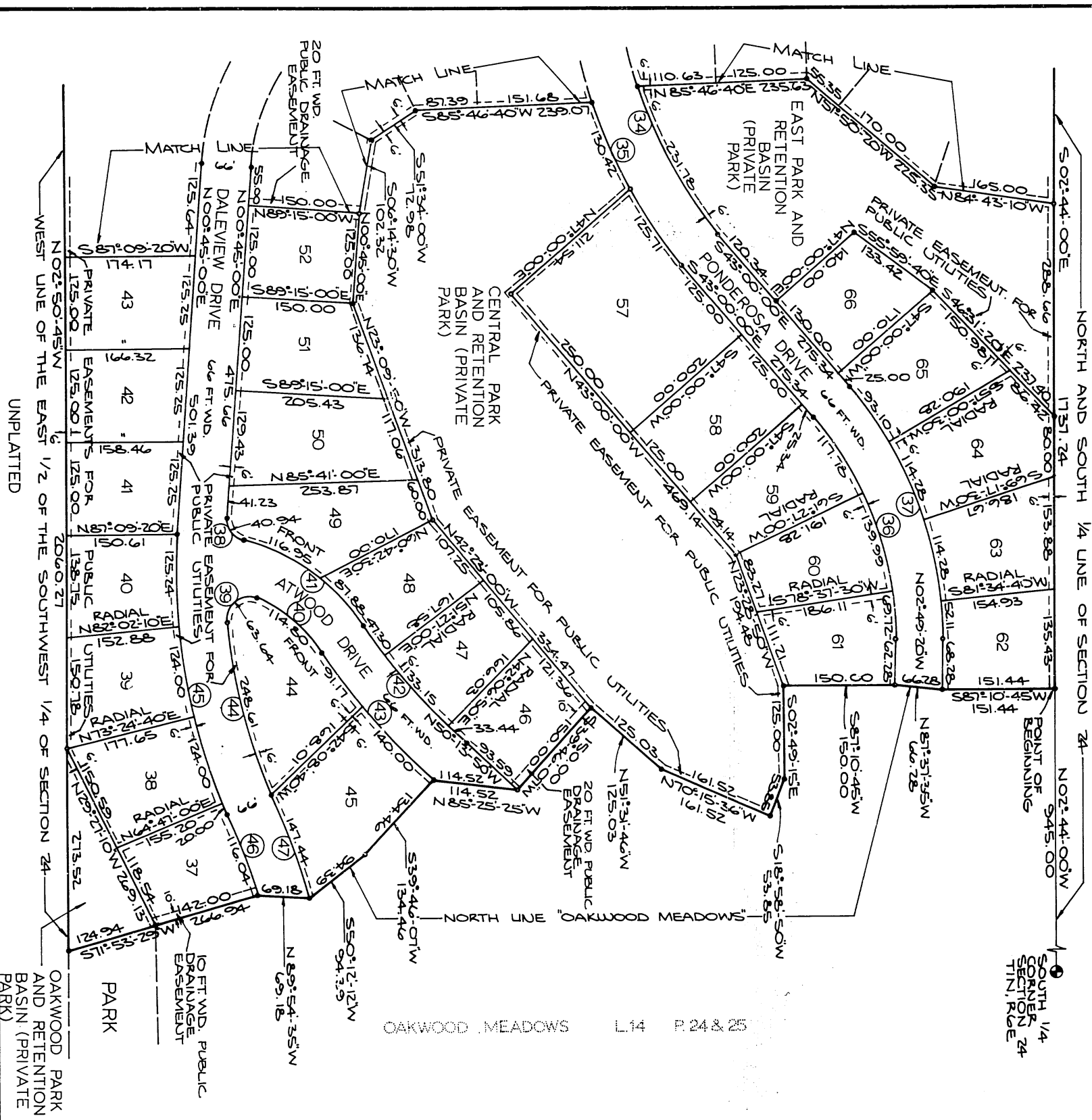


WASHTEAUM ENGINEERING CO. INC.  
SURVEYORS AND ENGINEERS  
ANN ARBOR, MICHIGAN 48106

# OAKWOOD MEADOWS NO. 2

A SUBDIVISION OF PART OF THE SW 1/4  
OF SECTION 24, T1N, R6E, GREEN OAK  
TOWNSHIP, LIVINGSTON COUNTY, MICHIGAN

UNPLATTED



SCALE 1"=100'

**LEGEND**

1. ALL DIMENSIONS ARE IN FEET
2. ALL CURVILINEAR DIMENSIONS ARE SHOWN ALONG THE ARC.
3. CONCRETE MONUMENTS HAVE BEEN PLACED AT POINTS MARKED "0"
4. LOT CORNERS HAVE BEEN MARKED WITH 1/2" x 22" IRON PIPES.
5. BEARINGS WERE ESTABLISHED FROM "OAKWOOD MEADOWS" RECORDED IN LIBER 14 OF PLATS, PAGE 24 AND 25 LIVINGSTON COUNTY RECORDS

**RESTRICTION CERTIFICATE**

This plat is subject to restrictions as required by Act 288 of 1967, as amended on certain lots with respect to the requirements of the Michigan Department of Natural Resources and/or the Michigan Department of Public Health, which are recorded in Liber 695, Page 51-59, Livingston County Records.

54591

0	CURVE DATA			
CURVE	DELTA	RADIUS	ARC	CHORD BRG.
34	32°37'57"	617.00	351.73	346°51' N72°41'37"W
35	33°42'28"	683.00	401.82	396°05' N72°05'42"W
36	40°10'45"	467.00	327.49	320°52' S72°54'35"E
37	40°10'45"	533.00	373.77	346°16' S72°54'35"E
38	78°11'50"	30.00	40.94	31°54' N58°20'55"W
39	121°52'54"	30.00	63.64	N52°58'10"E
40	31°01'29"	212.00	113.40	S50°44'33"E
41	42°12'57"	718.00	204.85	200°25' S53°20'21"E
42	15°00'00"	817.00	213.89	213.78 N42°45'55"W
43	15°00'00"	883.00	231.17	730°51' N42°45'55"W
44	18°48'11"	757.54	248.61	247°50' N71°12'35"W
45	27°21'29"	823.54	393.74	369°51' S72°21'25"E
46	08°50'00"	782.18	116.04	115°59' S72°21'25"E
47	09°57'35"	848.18	147.44	521°51'41"E

WASHTEMAN ENGINEERING CO. INC.  
 SURVEYORS AND ENGINEERS  
 ANN ARBOR, MICHIGAN 48106

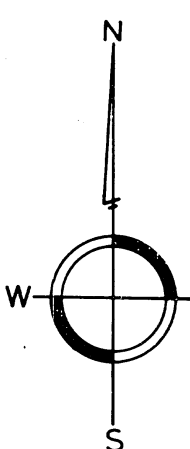
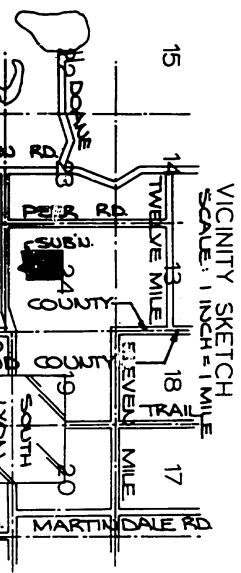
# OAKWOOD MEADOWS NO. 2

A SUBDIVISION OF PART OF THE SW 1/4  
 OF SECTION 24 T1N, R6E, GREEN OAK  
 TOWNSHIP, LIVINGSTON COUNTY, MICHIGAN

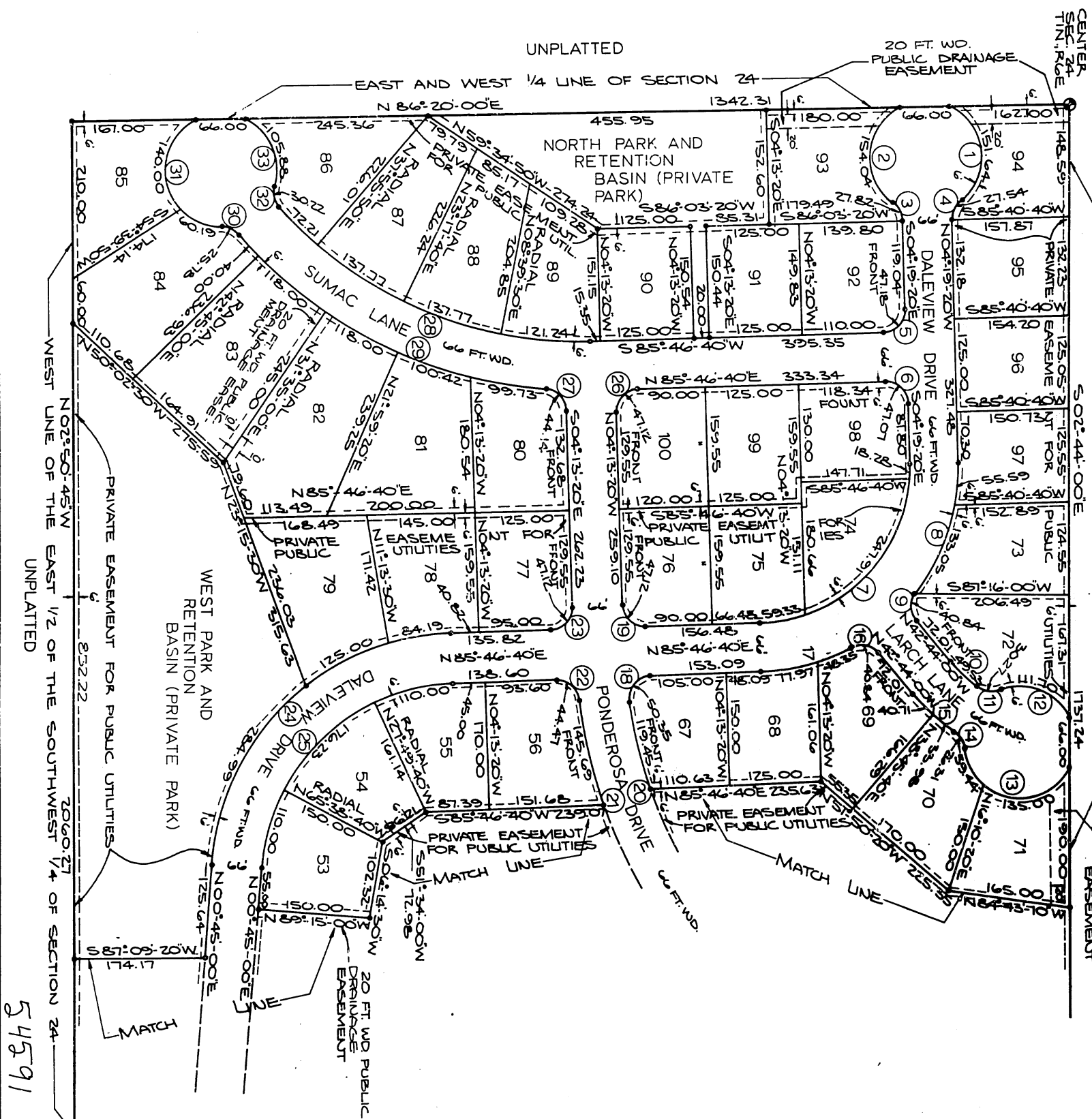
UNPLATTED

UNPLATTED

20 FT. WD. PUBLIC DRAINAGE EASEMENT



UNPLATTED



- LEGEND
1. ALL DIMENSIONS ARE IN FEET
  2. ALL CURVILINEAR DIMENSIONS ARE SHOWN ALONG THE ARC.
  3. CONCRETE MONUMENTS HAVE BEEN PLACED AT POINTS MARKED "O"
  4. LOT CORNERS HAVE BEEN MARKED WITH 1/2"x1/2" IRON PIPES
  5. BEARINGS WERE ESTABLISHED FROM 'OAKWOOD MEADOWS' RECORDED IN LIBER. 14 OF PLATS, PAGE 24 AND 25 LIVINGSTON COUNTY RECORDS

CURVE	DELTA	RADIUS	ARC	CHORD	CHORD B'G.
1	18° 50' 27"	75.00	151.64	121.10	S 09° 35' 26"E
2	117° 40' 49"	75.00	154.04	126.36	N 01° 23' 15"E
3	53° 07' 45"	30.00	27.62	26.63	S 30° 55' 15"E
4	90° 00' 00"	30.00	47.12	42.45	N 40° 42' 57"E
5	90° 05' 58"	30.00	41.15	42.46	S 40° 45' 35"W
6	89° 54' 02"	30.00	41.07	42.39	S 40° 45' 38"W
7	90° 05' 55"	207.00	325.51	293.00	S 40° 45' 38"W
8	39° 35' 19"	273.00	188.64	184.90	S 15° 25' 19"W
9	71° 59' 58"	30.00	40.84	37.76	N 03° 44' 01"W
10	13° 37' 30"	208.27	49.55	49.41	N 49° 32' 45"W
11	51° 45' 47"	30.00	30.27	29.00	N 85° 15' 55"W
12	85° 32' 05"	75.00	111.70	101.66	S 11° 30' 15"E
13	143° 32' 37"	75.00	194.44	144.38	N 65° 21' 25"W
14	50° 15' 00"	30.00	26.51	26.51	S 55° 12' 35"E
15	15° 34' 09"	274.27	74.46	74.46	N 80° 32' 05"W
16	71° 59' 58"	30.00	40.84	37.76	S 41° 45' 39"E
17	24° 30' 35"	273.00	126.51	125.19	N 72° 34' 25"E
18	90° 09' 40"	30.00	50.35	44.05	N 57° 41' 47"E
19	90° 00' 00"	30.00	47.12	42.45	N 49° 11' 23"W
20	30° 34' 57"	471.00	351.75	346.51	N 72° 41' 31"W
21	35° 42' 25"	683.00	401.82	396.05	N 72° 08' 46"W
22	84° 55' 51"	30.00	44.47	40.51	S 51° 45' 27"E
23	90° 00' 00"	30.00	47.12	42.45	S 40° 42' 57"W
24	85° 01' 57"	333.00	494.17	450.06	N 43° 15' 49"E
25	85° 01' 57"	2671.00	396.25	340.86	N 43° 15' 49"E
26	90° 00' 00"	30.00	47.12	42.45	N 40° 42' 57"E
27	84° 18' 52"	30.00	44.14	40.27	S 40° 22' 39"E
28	49° 49' 31"	539.31	446.99	454.35	N 67° 15' 57"W
29	45° 04' 10"	405.31	471.14	453.96	N 65° 59' 50"W
30	49° 14' 25"	30.00	25.78	25.00	S 45° 04' 57"E
31	152° 55' 52"	75.00	200.19	145.84	N 10° 14' 17"W
32	51° 43' 19"	30.00	30.22	28.96	N 15° 32' 12"W
33	80° 53' 13"	75.00	105.88	97.31	S 21° 07' 09"E

54591

WASHTENAW ENGINEERING CO. INC.  
SURVEYORS AND ENGINEERS  
ANN ARBOR, MICHIGAN 48106

# OAKWOOD MEADOWS NO. 2

A SUBDIVISION OF PART OF THE SW 1/4  
OF SECTION 24, T1N, R6E, GREEN OAK  
TOWNSHIP, LIVINGSTON COUNTY, MICHIGAN

**SURVEYOR'S CERTIFICATE**

I, Norman N. Fahrner, surveyor, certify: That I have surveyed, divided, and mapped the land shown on this plat, described as follows:

OAKWOOD MEADOWS NO. 2

A subdivision of part of the SW 1/4 of Section 24, T1N, R6E, Green Oak Township, Livingston County, Michigan: Commencing at the South 1/4 corner of Section 24, T1N, R6E, Green Oak Township, Livingston County, Michigan, said point also being the Southeast corner of "OAKWOOD MEADOWS", a subdivision of part of the Southwest 1/4 of Section 24, T1N, R6E, Green Oak Township, Livingston County, Michigan, as recorded in Liber 14 of Plats on pages 24 and 25, Livingston County Records; thence N 02°-44'-00" W 945.00 feet along the North and South 1/4 line of said section and the East line of said "OAKWOOD MEADOWS" to the POINT OF BEGINNING; thence along the North line of said "OAKWOOD MEADOWS" in the following courses: S 87°-10'-45" W 151.44 feet, N 87°-37'-35" W 66.28 feet, S 18°-58'-50" W 53.85 feet, S 02°-49'-15" E 125.00 feet, N 51°-31'-46" W 125.03 feet, N 70°-15'-36" W 161.52 feet, N 85°-25'-25" W 114.52 feet, S 39°-46'-07" W 150.00 feet, N 50°-12'-12" W 94.39 feet, S 39°-46'-07" W 134.46 feet, S 50°-12'-12" W 266.94 feet to a point on the West line of the East 1/2 of the Southwest 1/4 of said Section 24; thence N 02°-50'-45" W 2060.27 feet along said West line; thence N 86°-20'-00" E 1342.31 feet along the East and West 1/4 line of said section; thence S 02°-44'-00" E 1737.24 feet along the North and South 1/4 line of said section to the Point of Beginning; containing 64 lots numbered 37 through 100, inclusive, containing 5 parks and 57.36 acres of land, more or less.

That I have made such a survey, land-division and plat by the direction of the owners of such land. That such plat is a correct representation of all the exterior boundaries of the land surveyed and the subdivision of it. That the required monuments and lot markers have been located in the ground or that surety has been deposited with the municipality as required by Section 125 of the Act. That the accuracy of survey is within the limits required by Section 126 of the Act. That the bearings shown on the plat are expressed as required by Section 126 (3) of the Act and as explained in the legend.

July 31, 1973



Norman N. Fahrner  
Vice-President  
Registered Land Surveyor  
Michigan No. 17620

Washtenaw Engineering Co., Inc.  
859 South Wagner Road  
P.O. Box 1051  
Ann Arbor, Michigan 48106

**PROPRIETOR'S CERTIFICATE - CORPORATION**

F. J. Weinburger & Son, Incorporated, a corporation duly organized and existing under the laws of the state of Michigan, by Francis J. Weinburger, President and Secretary and Dorothy L. Weinburger, Vice-President and Treasurer, as proprietor has caused the land embraced in this plat to be surveyed, divided, mapped and dedicated as represented on this plat and the roads are for the use of the public; that North Park, East Park, Central Park, West Park and Oakwood Park are for the use of the lot owners; that the public utility easements are private easements and that all other easements are for the uses shown on the plat.

*Francis J. Weinburger*  
Francis J. Weinburger  
President & Treasurer  
56405 Grand River  
New Hudson, Michigan 48165

*Dorothy L. Weinburger*  
Dorothy L. Weinburger  
Vice President & Secretary  
56405 Grand River  
New Hudson, Michigan 48165

*Ken Vance Jr.*  
Ken Vance Jr.  
Witness  
F. J. WEINBURGER & SON, INC.  
56405 Grand River  
New Hudson, Michigan 48165

**PROPRIETOR'S CERTIFICATE - CORPORATION**

The Livingston Service Corporation, a corporation duly organized and existing under the laws of the State of Michigan, by Charles E. Trim, Secretary and Wilbur P. Vermullen, Resident Agent, as proprietor has caused the land embraced in this plat to be surveyed, divided, mapped and dedicated as represented on this plat and that the roads are for the use of the public; that North Park, East Park, Central Park, West Park and Oakwood Park are for the use of the lot owners; that the public utility easements are private easements and that all other easements are for the uses shown on the plat.

*Charles E. Trim*  
Charles E. Trim, Secretary  
611 East Grand River  
Howell, Michigan 48843

*Wilbur P. Vermullen*  
Wilbur P. Vermullen,  
Resident Agent  
611 East Grand River  
Howell, Michigan 48843

*Bernice B. Houchen*  
Bernice B. Houchen  
Witness

**ACKNOWLEDGMENT - CORPORATION**

State of Michigan) S.S.  
Livingston County)  
Personally came before me this 8th day of August 1973, Francis J. Weinburger, President and Secretary and Dorothy L. Weinburger, Vice President and Treasurer of the above-named corporation, to me known to be the persons who executed the foregoing instrument and to me known to be such President and Treasurer and Vice President and Secretary of said corporation, and acknowledged that they executed the foregoing instrument as such officers as the free act and deed of said corporation, by its authority.

*Jacquelyn Ann Music*  
Jacquelyn Ann Music  
Notary Public  
Acting in Livingston County, Michigan  
August 23, 1976

My Commission Expires

**ACKNOWLEDGMENT - CORPORATION**

State of Michigan) S.S.  
Livingston County)  
Personally came before me this 8 day of August 1973, Charles E. Trim, Secretary and Wilbur P. Vermullen, Resident Agent, of the above-named corporation, to me known to be the persons who executed the foregoing instrument and to me known to be such Secretary and Resident Agent of said corporation, and acknowledged that they executed the foregoing instrument as such officers as the free act and deed of said corporation, by its authority.

*Bernice B. Houchen*  
Bernice B. Houchen  
Notary Public  
Livingston County, Michigan  
Sept 22, 1975

My Commission Expires

WASHTEWAN ENGINEERING CO. INC.  
SURVEYORS AND ENGINEERS  
ANN ARBOR, MICHIGAN 48106

# OAKWOOD MEADOWS NO. 2

A SUBDIVISION OF PART OF THE S W 1/4  
OF SECTION 24, T1N, R6E, GREEN OAK  
TOWNSHIP, LIVINGSTON COUNTY, MICHIGAN

### COUNTY TREASURER'S CERTIFICATE

The records in my office show no unpaid taxes or special assessments for the five years preceding August 14, 1973, involving the lands included in this plat. CERTIFIED July 29, 1974

*Dorothea J. Greff*  
Dorothea J. Greff, County Treasurer  
Livingston County

### CERTIFICATE OF MUNICIPAL APPROVAL

I certify that this plat was approved by the Township Board of the Township of Green Oak at a meeting held July 9, 1974, and was reviewed and found to be in compliance with Act 288, P.A., 1967. The preliminary plat was approved by the Livingston County Health Department by letter dated May 15, 1973.

*Mona M. Menzel*  
Mona M. Menzel  
Township Clerk

### COUNTY DRAIN COMMISSIONER'S CERTIFICATE

Approved on August 29, 1973, as complying with Section 192 of Act 288, P.A., 1967 and the applicable rules and regulations published by my office in the County of Livingston.

*Richard A. Rudnicki*  
Richard A. Rudnicki  
Drain Commissioner

### COUNTY PLAT BOARD CERTIFICATE

This plat has been reviewed and is approved by the Livingston County Plat Board on August 14, 1974 as being in compliance with all of the provisions of Act 288, P.A., 1967, and the Plat Board's applicable rules and regulations.

*Joseph H. Ellis*  
Joseph H. Ellis, County Clerk

*John O. Blackburn*  
John O. Blackburn, Register of Deeds

*Dorothea J. Greff*  
Dorothea J. Greff, Treasurer

Certified true copy of Recorded Plat  
*Allison Goren*  
ALLISON GOREN  
STATE TREASURER  
By *Richard E. Somers*  
Richard E. Somers, Plat Examiner  
Date October 7, 1974

State of Michigan) S.S.  
Livingston County)

This plat was received for record on the 3rd day of October, A.D., 1974 at 2:00 P.M. recorded in Liber 17 of Plats on Page 3235.

*John O. Blackburn*  
John O. Blackburn,  
Register of Deeds

### CERTIFICATE OF COUNTY ROAD COMMISSIONERS

Approved on May 10, 1974 as complying with Section 183, of Act 288, P.A., 1967, and the applicable published rules and regulations of the Board of Road Commissioners of Livingston County.

*Melvin L. Simon*  
Melvin L. Simon  
Chairman

*James W. Featherly*  
James W. Featherly  
Member

*Andrew R. Jackson*  
Andrew R. Jackson  
Member